

Quick Start Guide



Before you Begin:

Your Moxi V comes with a partial battery charge and must be run plugged into the supplied power adapter for charging and running tests.

Required Materials:

- Cassettes and diluent (e.g. PBS).
- Biological cell sample.
- Pipette and tips for 60µL aliquot.

Cassette Specifications:

- Cassette size range: 3 - 27µm particles
- Concentration range:
 - * Counts: 10,000 to 1,750,000 cells/ml
 - * Viability: 10,000 - 1,000,000 cells/ml

Sample Prep Considerations:

- **Solution Conductivity:** Cells must be suspended in standard, conductive, lab media (e.g. PBS or equivalent)
- **Single-Cell Suspensions:** Cells need to be prepared as single cell suspensions. Clusters/aggregates should be broken apart with mechanical trituration and/or protease dissociation (e.g., Accutase). Samples with large extracellular debris particles or aggregates should be strained/filtered before running.
- **Viability Staining:** The Moxi V uses a 532nm laser with a 561nm/LP emission filter. Propidium iodide (PI, 2µg/ml, 5min) is the recommended viability stain.
- ORFLO approved/kits reagents, and protocols are strongly recommended.

Data Transfer:

- FCS 3.1 test data is available for transfer via USB. To transfer data
 - Plug the unit into a PC/Mac with supplied cable.
 - Touch the "USB Disk" icon on the Home Screen.
 - Touch the "Connect" icon.
- The unit will appear as an external, flash drive.

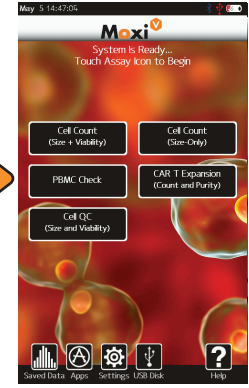
User Manual:

An electronic copy of the complete Moxi V user manual can be found at www.ORFLO.com by following the "Resources" and then "User Manuals" links.

1) Turn Moxi V ON



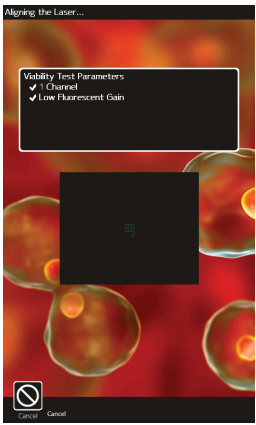
2) Touch Desired Assay



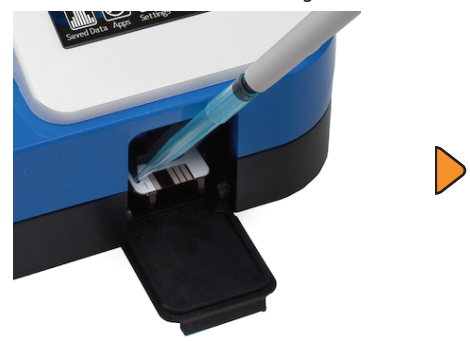
3) Open the Door. Insert Cassette. Lift Door to First Stop.



4) Auto Laser Alignment. Please Wait.

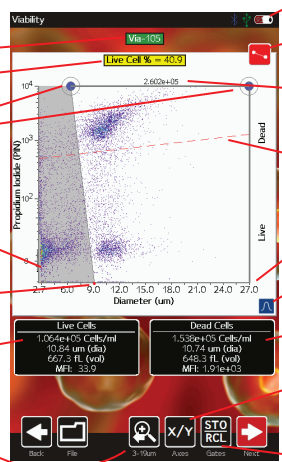


5) Pipette 60µL of Stained Sample Into the Cassette. Close Door. Test Begins.



8) Data Summary

- Touch to Rename File
- Cell % Results
- Touch-and-Drag Blue markers to adjust count region
- Blank or Grayed Noise-eliminated Region
- Toggle to Angle Gate
- Live Cell (lower population) Results
- Press to Change Size Scale Range: 2-27, 2-19, 2-11 µm

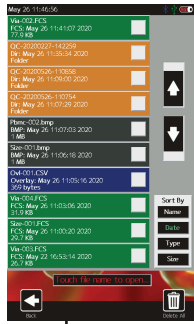
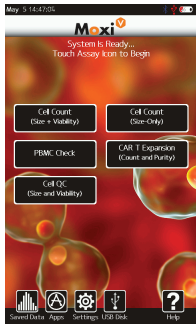


- Battery/Charging Indicator
- Toggle Between Size (Blue) and Fluorescent (Red) and Noise (Yellow) Gates.
- Total Count Between Size (blue) Gates
- Fluorescent Gate (Red)
- Max Size scale
- Turn on Histogram Overlays
- Upper Gated Population Results
- Select to Change Axis Display: PMT vs Size, Size/Fluorescence Histograms
- Store/Recall Gate Locations

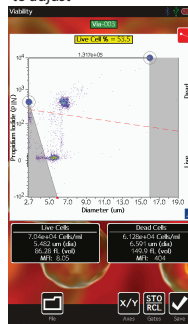
Dot Plot Results



Opening, Viewing, Comparing, and Printing Data:

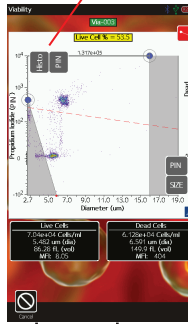


Touch and drag gates to adjust



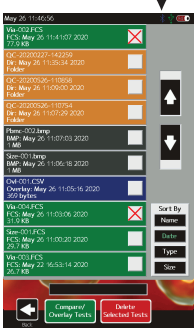
Touch red icon to toggle gate modes

Specify y-axis parameter

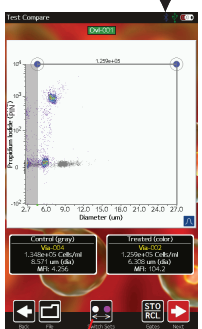


Specify x-axis parameter

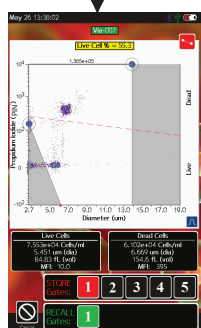
Test Comparisons/Overlays



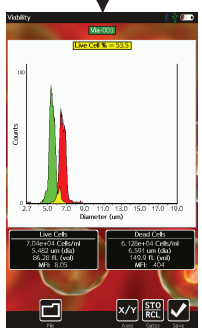
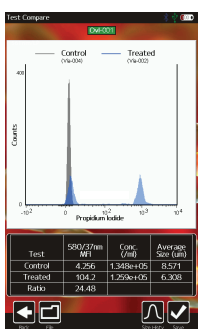
Use blue size gates to define region to be compared



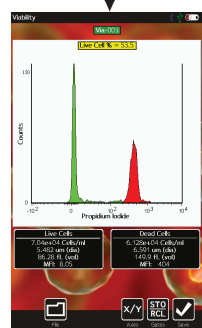
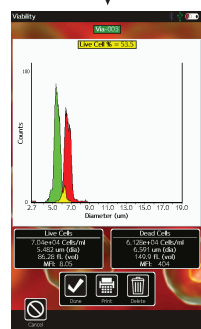
"Switch Sets" toggles the "control" and "treated" set designations



Touch number to store/recall gates into/from memory



Print Screen (export to .bmp file)



Exact screenshot saved as a .bmp file on the data disk (access through USB connection to the computer)